



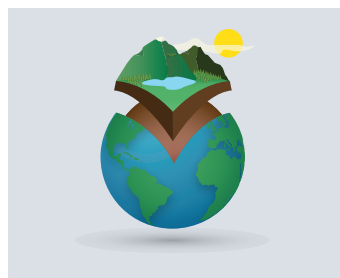
MOUNTAINS ARE VITAL FOR OUR LIVES



Almost
1 billion people live
in **mountain** areas.



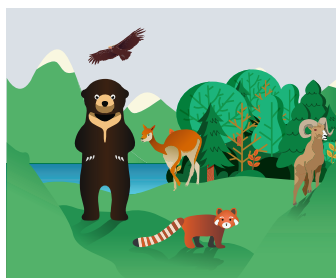
Mountains are **home**
to a variety of different
**languages, ethnic
groups, religions**
and **belief** systems.



Mountains cover
about 22% of
earth's land surface.



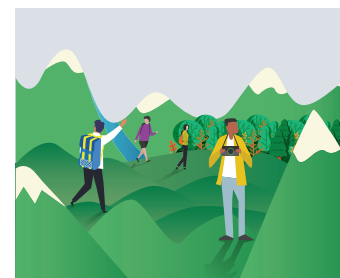
Mountains provide
between 60 and 80%
of all freshwater
resources for our planet.



Mountains host
25% of terrestrial
biodiversity and **28%**
of earth's forests.



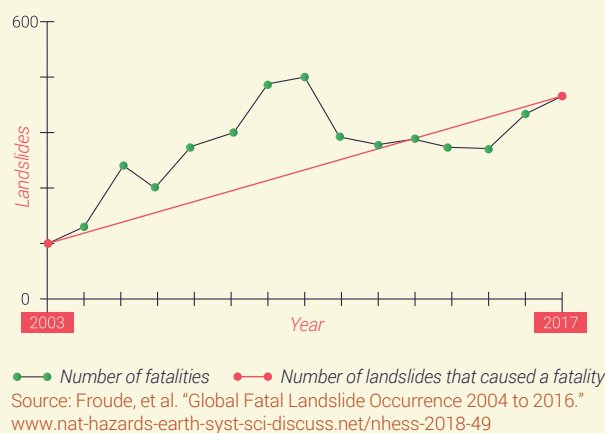
6 of the 20 most
important food crops
originate in mountains.
(potatoes, maize, barley,
sorghum, apples, tomatoes)



Mountains attract
15-20% of global
tourism.

Mountains are under threat from climate change, land degradation and natural disasters.

Fatal landslides have increased by **125%**
from **2003** to **2017** (see graph).



Melting of glaciers has almost
doubled **since 2005**, affecting
water storage worldwide.



1 in 3 mountain people in developing
countries is at risk of **food insecurity**.



Climate change and economic factors
are major drivers for **outmigration**.



Call for action



Targeted investments



**Sustainable production
and diversification of
food systems**



**Strengthening
skills and value chains**



**Mountain related
policies**